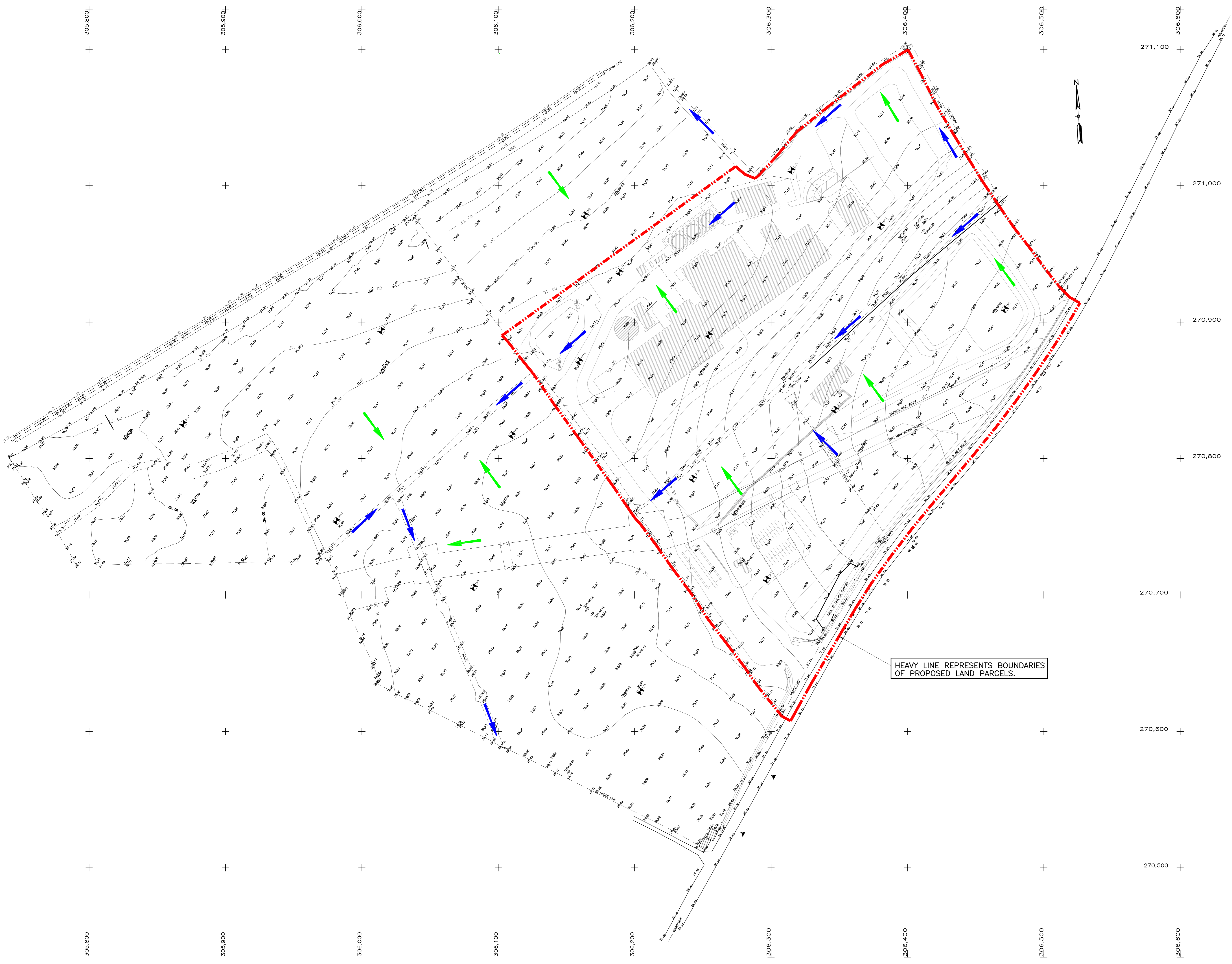
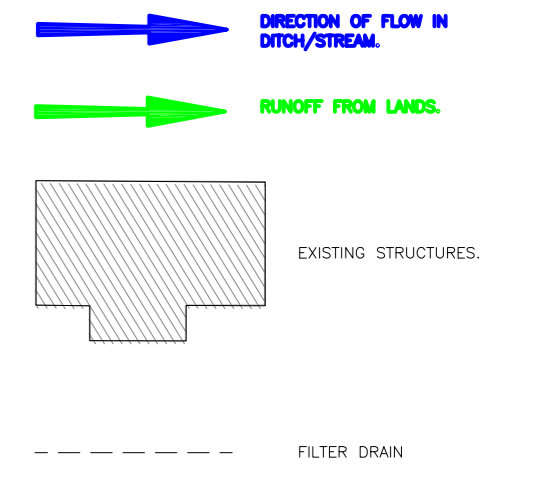


NOTES

- FOR STANDARD NOTES REFER TO DRAWING No. 29043/CD/000
- THIS DRAWING IS TO BE READ IN CONJUNCTION WITH ALL RELEVANT ARCHITECTURAL, SERVICES & M.E.A. DRAWINGS.
- ALL DIMENSIONS ARE IN MILLIMETRES UNLESS OTHERWISE NOTED. LEVELS ARE STRUCTURAL LEVELS IN METRES TO ORDNANCE DATUM. THIS DRAWING MUST NOT BE SCALED.



HEAVY LINE REPRESENTS BOUNDARIES OF PROPOSED LAND PARCELS.

REV	DESCRIPTION	BY	APPR	DATE
C	ISSUED FOR PLANNING	AD	NK	14/05/20
B	RESUBMITTED FOR COMMENT	RN	NK	29/11/19
A	ISSUED FOR COMMENT	RN	NK	22/11/19

This document is copyright and the property of M&E Associates. This document is not to be reproduced, stored in a retrieval system or transmitted in any form or by any means, without the prior written permission of M&E Associates.

**M&E McElroy Associates**  
 ENGINEERS TO INDUSTRY  
 72 Haddington Road, Booteridge, D.A. Tel: 660 9000 E Mail: info@mea.ie Web: www.mea.ie

CLIENT  
 INDAVER

PROJECT  
 SITE SUSTAINABILITY PROJECT

TITLE  
 NATURAL SITE DRAINAGE GA

DESIGNED:	CHECKED:	APPROVED:
JMD	JMD	NK
DRAWN:	DATE:	SCALE:
RN	SEPT 19	1:500 @ A0
ORIGINAL:	29043-CD-019	REV: C